



NESAWG

NORTHEAST SUSTAINABLE AGRICULTURE WORKING GROUP

A FARM AND FOOD SYSTEM FOR ALL



Stories from our Kitchen Table

NESAWG Delegation - NEASDA 2023, NH



**CRISTINA CABRERA,
EXECUTIVE DIRECTOR
AT NESAWG**



NESAWG

Northeast Sustainable Agriculture Working Group
THE REGION'S FOOD AND FARM NETWORK





ISSUES & PRIORITIES

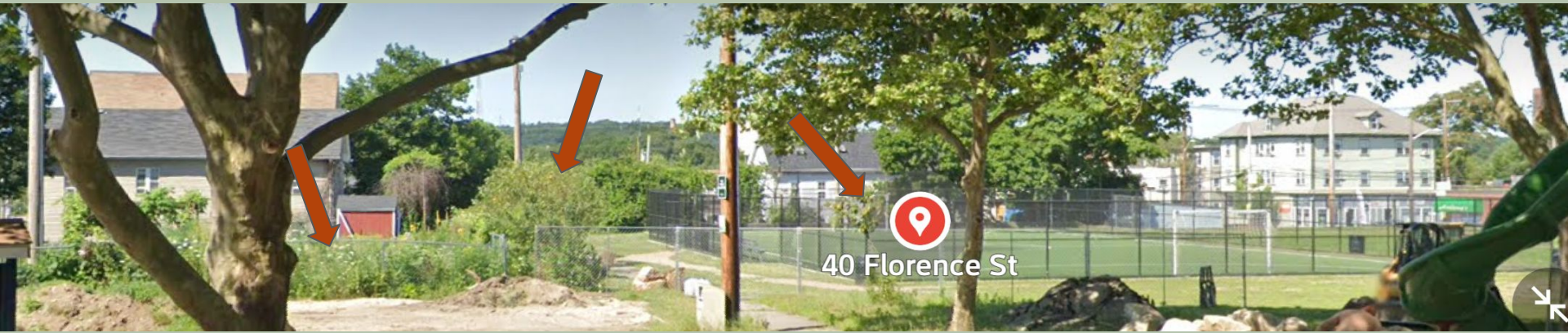














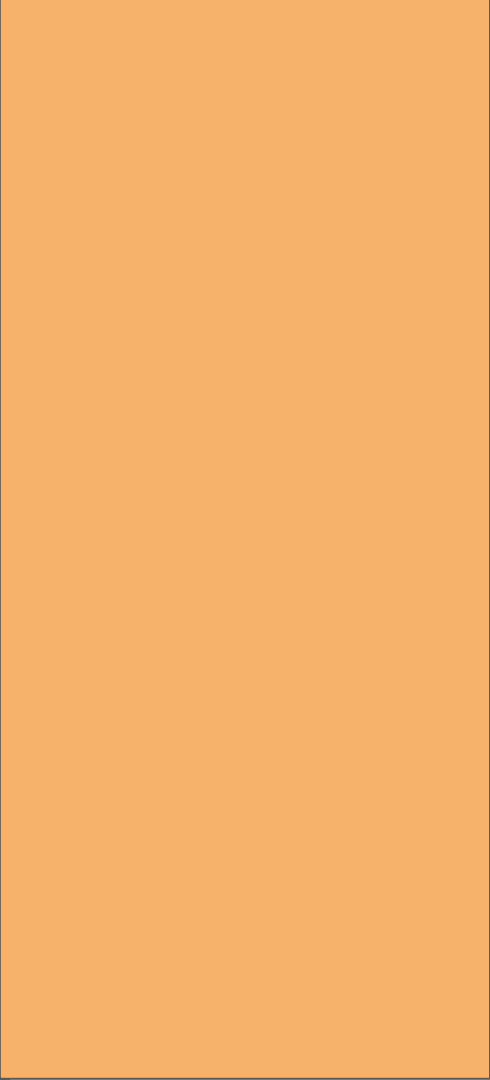
H

**HEMP MILK
& HONEY**



Robert Peck
Hemp Milk and Honey









**GLOBAL
VILLAGE**



**ULUM PIXAN, CO-FOUNDER
GLOBAL VILLAGE FARMS**









northeast

FARMERS
OF COLOR
LAND TRUST

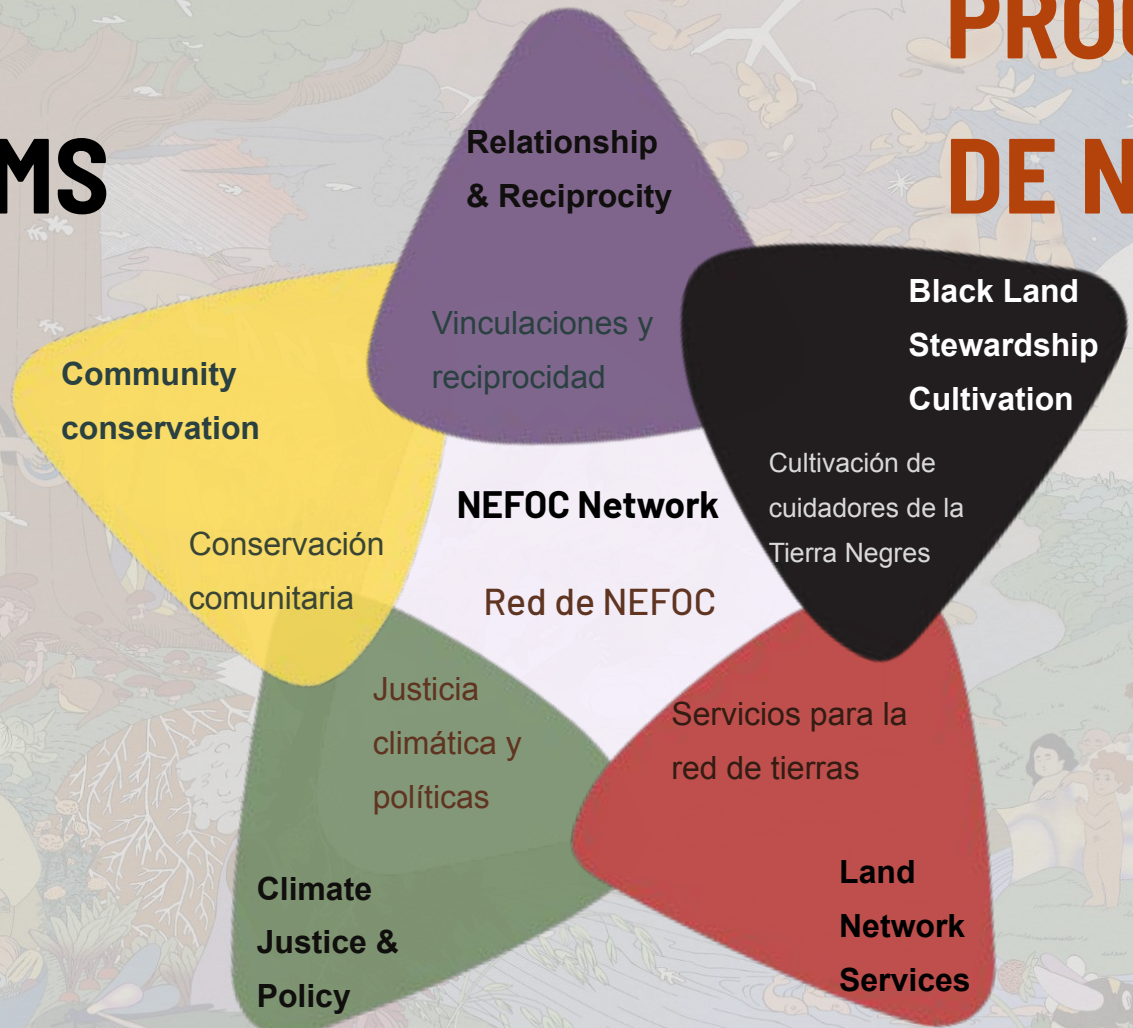


**ROBERT CHANG,
POLICY
COORDINATOR at
NEFOC
(Northeast Farmers
of Color Land Trust)**

**Coordinador de
políticas en NEFOC
(Fideicomiso de
tierras para
agricultores de color
en el noreste)**

NEFOC's PROGRAMS

PROGRAMAS DE NEFOC







ORGANIZATION FOR REFUGEE AND IMMIGRANT SUCCESS



ANTHONY MUNENE
NASAP PROJECT DIRECTOR
AT ORIS
(Organization for Refugee and
Immigrant Success)
And Independent Farmer at
Two Mountain Farm

NASAP= New American Sustainable
Agriculture Project







ACTIONS

ACTIONS for Urban Farming, Community Garden Growers & Urban Producers

- * Develop a working relationship with Tribes Aboriginal to Turtle Island respecting Indian Country Protocol, and upholding Indigenous Sovereignty & the right to self-determination.
- * Conduct an assessment of all brownfields in the state
- * Fund clean-up of brownfields and turn them into agricultural land
- * Commit to land repatriation, returning cleaned-up agricultural lands to Aboriginal tribes and communities.
- * Provide access to long-term land tenure to socially and economically disadvantaged growers & farmers, prioritizing BIPOC growers and low-income producers organized in democratically controlled groups.
- * Commit to the development of organic community gardens within ½ mile walking distance in low income BIPOC neighborhoods.
- * Provide access to free wells, clean water & irrigation systems
- * Develop and fund tools & equipment share programs
- * Commit to developing sites for the creation of pollinator pathway(s) (parks, open spaces, trails etc)
- * Free access to food safety training & organic growing practices

ACTIONS for Land Access/ Credit, Loans, & Grant Access

- ❖ Provide support to land trust projects focusing acquiring land specifically for urban agriculture.
- ❖ Develop a streamlined process in which municipalities can lease land to urban farmers and organizations in locations dealing with food apartheid
- ❖ Develop a process in which a land easement can be assigned to vacant lots in urban setting for the purpose of urban agriculture
- ❖ Provide educational resources on various ways new and beginning farmers can access land
- ❖ Grant and loan opportunities for new and beginning farmers for support in the early stages of farm development
- ❖ Support for new and beginning farmers on financial advice for grants, loans and business planning resources

ACTIONS for Democratically Controlled Farming: Co-operative & CSA Farming

We urge the increase access for cooperative/collective/community-led and member owned/led organizations to participate in future meetings conference and closed door meetings.

* Ensure that cooperative producers have equitable access to agricultural programs including:

- ➡ capital
- ➡ farm credit and loans
- ➡ crop insurance
- ➡ land tenure opportunities
- ➡ education, training, mentorship, technical assistance programs

* Invest in a “For Us, By Us” approach where resources are prioritized for local cooperative-led, democratically controlled organizations, centered in farmer and community needs, barriers, challenges, and goals instead of capital gain and profit of the few.

* Increase funding for:

- ➡ Collectivized farmers (and report disaggregated metrics on recipient demographics), including the 2501 Program;
- ➡ Programs that improve access to credit and capital for community/collectively cooperative farms;
- ➡ Programs that directly address land access and tenure opportunities for cooperatives or collectively owned farms;
- ➡ Collective and cultural commons farm practices as part of Climate Smart Agriculture to mitigate climate change, increase climate resilience, and protect ecosystems.

ACTIONS for Racial Equity

* We urge NEASDA to increase access for BIPOC-led and member organizations to participate in future meetings

* Ensure that BIPOC producers have equitable access to agricultural programs including:

- ➡ capital
- ➡ farm credit and loans
- ➡ crop insurance
- ➡ land tenure opportunities
- ➡ training, mentorship, technical assistance programs

* Invest in a “For Us, By Us” approach where resources are prioritized for local BIPOC-led, BIPOC-centered organizations, rather than distributed to and through systematically privileged and resourced organizations with limited or no connection to and grounding in BIPOC farmer needs, barriers, challenges, and goals.

* Increase funding for:

- ➡ Socially disadvantaged farmers (and report disaggregated metrics on recipient demographics), including the 2501 Program;
- ➡ Programs that improve access to credit and capital for limited resource BIPOC farmers;
- ➡ Programs that directly address land access and tenure opportunities for BIPOC farmers;
- ➡ Indigenous and other culturally relevant regenerative farm practices as part of Climate Smart Agriculture to mitigate climate change, increase climate resilience, and protect ecosystems.

**ACTIONS for
Migrant, Immigrant & Refugee Farming respecting
Self-Determination (TBD)**

We hope for more access to legalization of farm workers as skilled and indispensable essential workers.

Access to system navigators that are linguistically and culturally competent or other tools like interpreting or and translation for food system navigation

Assure there is fair and dignified housing for all workers

All farm workers are entitled to minimum wage, overtime pay, breaks and tips and are protected under health, safety, and anti-discrimination laws

Access to a direct avenue to full citizenship

Access to credit, education, and business capacity so workers can become farm/land owners

Ability to work in native language

Access to professional and personal development and education resources

Access to funding and assistance regardless of immigration status

**ISSUES, PRIORITIES & ACTIONS for
Farm Bill 2023**





Q&A





<https://nefoclandtrust.org/>



<https://nefolandtrust.org/>

THANK YOU

Organizations Represented

North Star Fund

Native Green

NESAWG

NOFA Mass

Global Village Farms

Food Solutions New England

Southern New England Farmers of Color

Collaborative

Northeast Farmers of Color Land Trust

Green Village Initiative

American Farmland Trust

Rhode Island Food Policy Council

Farm to Institution New England

GrowNYC

The Carrot Project

Agricultural Viability Alliance

Extension Foundation

Farm to Institution New England

Catskills Agrarian Alliance

Community Placement Network

Organization for Refugee and Immigrant

Success

Hemp Milk & Honey

Two Mountain Farm

Northeast Farmers of Color Land Trust

Funders





You can reach us at
info@nesawg.org

Or leave a message at
401-484-8110

NESAWG

Northeast Sustainable Agriculture Working Group
THE REGION'S FOOD AND FARM NETWORK